

CUSTOMER SPECIFICATIONS

** SAVE FOR REORDERING **

** JOB # 1087934 **

JE PISTONS

10800 VALLEY VIEW STREET
CYPRESS, CA 90630

DATE 07/11/19

(714)898-9763

PO # KJELL HEMI

ACC #

/

PISTON PART # 370477 quantity 8
MOTOR TYPE CHRYSLER 426 HEMI
HEAD DESC. INDY HEMI
DISPLACEMENT
PISTON TYPE DOME
NET PISTON VOLUME 92.4
BORE 4.400 (111.76mm)
STROKE

ROD LENGTH
DOME HEIGHT .645 (16.38mm)
COMP. DIST 1.500 (38.10mm)
Int .290 (7.37mm) 35 Deg
Exh ^ .220 21 Deg
Valve Pocket depth measured from Deck

IMPORTANT
CLEARANCE INFORMATION
GUIDELINES ONLY
Set Clearance to .0055 (.1397mm)
Some applications may require more
clearance. Measure piston diameter
.500(13mm) up from bottom of skirt.

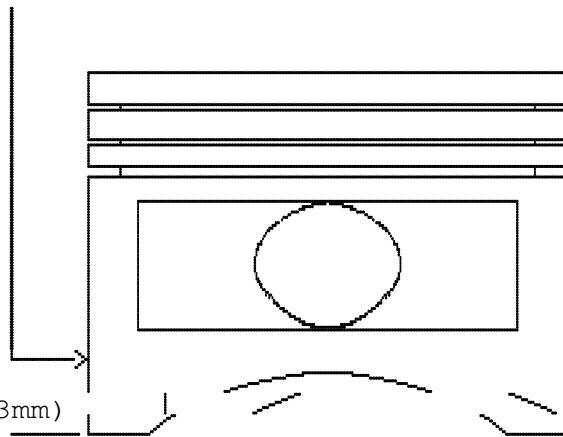
CORRECT PISTON INSTALLATION IS THE
RESPONSIBILITY OF THE CUSTOMER

Groove Width Land Width
TOP .064 (1.63mm) .430 (10.92mm)
2ND .064 (1.63mm) .150 (3.81mm)
OIL .188 (4.78mm) .080 (2.03mm)

Radial Depths
Top .207 (5.26mm)
2nd .199 (5.05mm)
Oil .2 (5.08mm)

PIN DIA .990 (25.15mm)
PIN LENGTH 2.930 (74.42mm) .500 (13mm)
Dbl SPIRO Locks

ACTUAL WEIGHT 720 GRAMS



ALL SPECIFICATIONS ARE SUBJECT
TO MANUFACTURERS TOLERANCES