

Technical Service Bulletin

NUMBER: 08-032-00 REV. A

GROUP: Electrical

DATE: Dec. 29, 2000

This bulletin is supplied as technical information only and is not an authorization for repair. No part of this publication may be reproduced, stored in a retrieval system, or transmitted, in any form or by any means, electronic, mechanical, photocopying, or otherwise, without written permission of DaimlerChrysler Corporation.

THIS BULLETIN SUPERSEDES TECHNICAL SERVICE BULLETIN 08-032-00, DATED OCTOBER 20, 2000, WHICH SHOULD BE REMOVED FROM YOUR FILES. THIS BULLETIN IS A COMPLETE REVISION AND NO ASTERISKS HAVE BEEN USED TO HIGHLIGHT REVISIONS

SUBJECT:

"Service 4WD" Lamp Illuminated On 4X2 Vehicles

OVERVIEW:

This bulletin involves installing a revised HVAC control assembly.

MODELS:

2001	(AN)	Dakota
2001	(DN)	Durango

NOTE: THIS BULLETIN APPLIES TO 4X2 VEHICLES BUILT BEFORE OCTOBER 13, 2000 (MDH 1013XX).

SYMPTOM/CONDITION:

The "Service 4WD" lamp is illuminated even though the truck is not a 4X4 vehicle.

DIAGNOSIS:

Start the engine. Once the instrument cluster bulb check has been completed, verify that the "Service 4WD" lamp is illuminated. If the "Service 4WD" lamp is illuminated, perform the Repair Procedure.

PARTS REQUIRED:

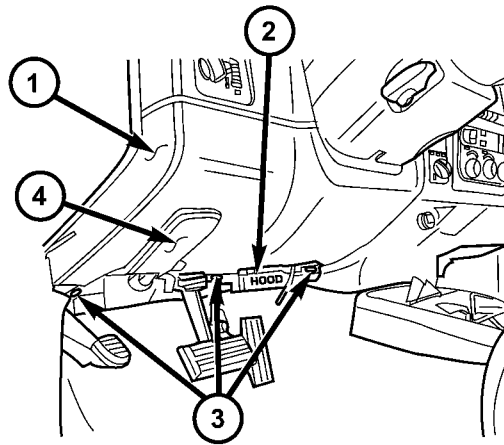
Qty.	Part No.	Description
AR (1)	55055904AE	Assembly, HVAC Control, Durango With Rear Heat And A/C
AR (1)	55055907AE	Assembly, HVAC Control, Durango Without Rear Heat And A/C
AR (1)	55055905AF	Assembly, HVAC Control, Dakota, With A/C And Rear Window Defogger
AR (1)	55056408AE	Assembly, HVAC Control, Dakota, With A/C, Without Rear Window Defogger
AR (1)	55055906AF	Assembly, HVAC Control, Dakota, Without A/C, With Rear Window Defogger
AR (1)	55056409AE	Assembly, HVAC Control, Dakota, Without A/C, Without Rear Window Defogger

REPAIR PROCEDURE:

THIS REPAIR IS COMPATIBLE WITH DAIMLERCHRYSLER'S MOBILE SERVICE PROGRAM AND DOES NOT REQUIRE HOISTS OR OTHER FULL SERVICE FACILITY SPECIAL EQUIPMENT.

WARNING: DISABLE THE AIRBAG SYSTEM BEFORE ATTEMPTING INSTRUMENT PANEL COMPONENT SERVICE. DISCONNECT AND ISOLATE THE BATTERY NEGATIVE (GROUND) CABLE, THEN WAIT TWO MINUTES FOR THE AIRBAG SYSTEM CAPACITOR TO DISCHARGE BEFORE PERFORMING FURTHER DIAGNOSIS OR SERVICE. THIS IS THE ONLY SURE WAY TO DISABLE THE AIRBAG SYSTEM. FAILURE TO TAKE THE PROPER PRECAUTIONS COULD RESULT IN ACCIDENTAL AIRBAG DEPLOYMENT AND POSSIBLE PERSONAL INJURY.

1. Disconnect and isolate the battery negative cable.
2. If the vehicle is equipped with an automatic transmission, turn the ignition switch to the Unlock position, set the park brake, and place the transmission gear selector lever in the LOW position.
3. If the vehicle is equipped with a tilt column, set the tilt steering column in its lowest position.
4. Reach under the left end of the instrument panel to access and unsnap the rod end clip on the park brake release link and disengage the link from the back of the handle (Fig. 1).

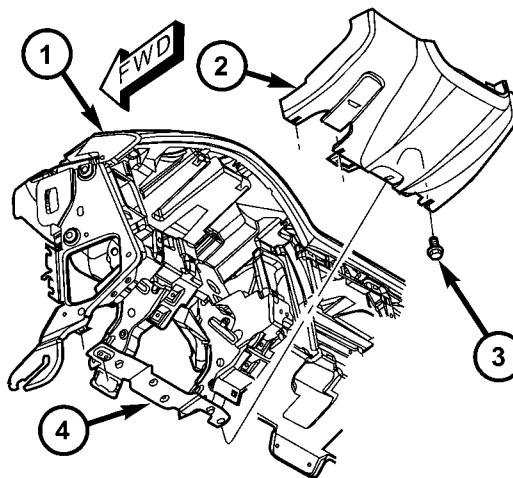


80b58a77

Fig. 1 STEERING COLUMN OPENING COVER INSTALLATION

- 1 - STEERING COLUMN OPENING COVER
- 2 - HOOD RELEASE HANDLE
- 3 - SCREWS
- 4 - PARKING BRAKE RELEASE HANDLE

-
- 5. Remove the three screws that secure the lower edge of the steering column opening cover to the lower instrument panel reinforcement.
 - 6. Using a trim stick or another suitable wide flat-bladed tool, gently pry the upper edge of the steering column opening cover just below the cluster bezel on each side of the steering column away from the instrument panel far enough to disengage each of the snap clip retainers from their receptacles in the instrument panel base trim (Fig. 2).



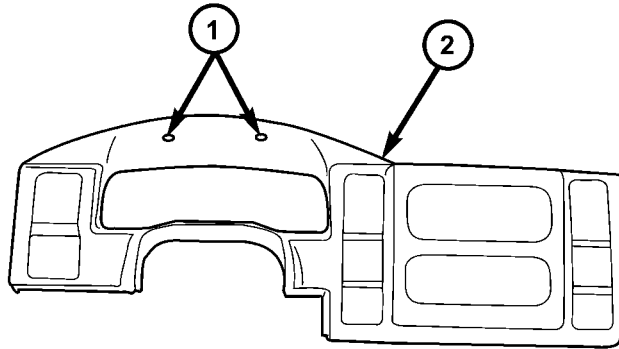
80b58792

Fig. 2 STEERING COLUMN OPENING COVER

- 1 - INSTRUMENT PANEL TOP COVER
- 2 - STEERING COLUMN OPENING COVER
- 3 - SCREW
- 4 - HOOD RELEASE BRACKET

-
- 7. Remove the steering column opening cover from the instrument panel.

8. Remove the two screws in the hooded area above the instrument cluster that secures the cluster bezel to the instrument panel base trim (Fig. 3).



80b55a02

Fig. 3 CLUSTER BEZEL

- 1 - SCREWS
 - 2 - CLUSTER BEZEL
-

9. Using a trim stick or another suitable wide flat-bladed tool, gently pry around the perimeter of the cluster bezel to disengage the snap clips from their receptacles in the instrument panel base trim.
10. Pull the right side of the cluster bezel away from the instrument panel far enough to access and disconnect the instrument panel wire harness connector for the headlamp switch from the switch connector receptacle.
11. Pull the left side of the cluster bezel away from the instrument panel far enough to access and disconnect the instrument panel wire harness connectors from the receptacles for the passenger airbag ON/OFF switch (if equipped), the rear window defogger switch (if equipped), the HVAC control, and the transfer case switch (if equipped).
12. Remove the cluster bezel from the instrument panel.
13. Remove the four screws that secure the HVAC control to the cluster bezel (Fig. 4).

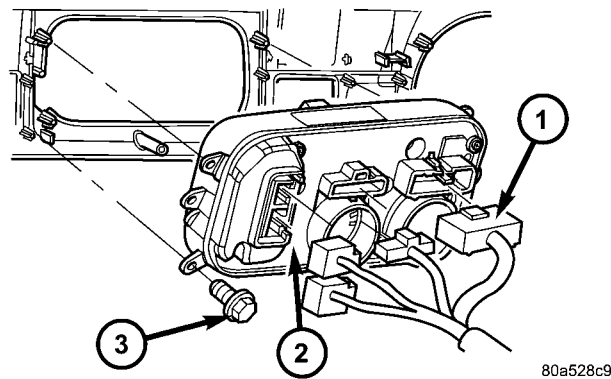


Fig. 4 HVAC CONTROL

- 1 - HVAC CONTROL WIRING HARNESS CONNECTOR
 - 2 - HVAC CONTROL
 - 3 - HVAC CONTROL MOUNTING SCREW
-

14. Remove the HVAC control from the instrument panel.
15. Position the new HVAC control (see Parts Required section) in the cluster bezel and secure it with four screws. Tighten the screws to 2.2 N·m (17 ±3 in. lbs.)
16. Position the cluster bezel to the instrument panel.
17. Pull the left side of the cluster bezel away from the instrument panel far enough to access and reconnect the instrument panel wire harness connectors to the receptacles for the passenger airbag on/off switch (if equipped), the rear window defogger switch (if equipped), the HVAC control, and the transfer case switch (if equipped).
18. Pull the right side of the cluster bezel away from the instrument panel far enough to access and reconnect the instrument panel wire harness connector for the headlamp switch to the switch connector receptacle.
19. Align the snap clips on the cluster bezel with the receptacles in the instrument panel base trim.
20. Using hand pressure, press firmly on the cluster bezel over each of the snap clip locations until each snap clip is fully engaged in their receptacle.
21. Install and tighten the two screws in the hooded area above the instrument cluster that secure the cluster bezel to the instrument panel base trim (Fig. 3). Tighten the screws to 2.2 N·m (20 in. lbs.).
22. Position the steering column opening cover to the instrument panel.
23. Align the snap clip retainers on the steering column opening cover with the receptacles in the instrument panel base trim.
24. Using hand pressure, press firmly on the steering column opening cover over the snap clip locations until each of the snap clips are fully engaged in their receptacle.
25. Install and tighten the three screws that secure the lower edge of the steering column opening cover to the instrument structural support. Tighten the screws to 2.2 N·m (20 in. lbs.).
26. Reach under the left end of the instrument panel to access and engage the park brake release link to the back of the handle. Then snap the rod end clip over the park brake release link to secure the connection.
27. Reconnect the battery negative cable.
28. On vehicles equipped with A/C, perform the A/C cool down test using the DRBIII®.

POLICY:

Reimbursable within the provisions of the warranty.

TIME ALLOWANCE:

Labor Operation No:	24-50-10-99	0.3 Hrs.
---------------------	-------------	----------

FAILURE CODE:

P8	New Part
----	----------